



Leicestershire County Council

Communities Fund

Outcomes and Impact Report

Equalities, Community Engagement and
Rural Partnerships Lead Member Briefing

20 November 2020



Contents

Introduction	3
Development and operation of the Communities Fund	4
Operational effectiveness	6
Community and VCSE impacts	7
1. Continuing service provision, organisational survival and sustainability	8
2. Innovation and enhanced and adapted services	9
3. Community responses to the pandemic	10
Conclusion and recommendations	11
Appendix A	13
Communities Grant Round 1 Criteria	13
Appendix B	14
Areas covered by Communities Grant Round 2	14
Appendix C	15
Distribution of Communities Fund Round 1 Grant	15
List of projects awarded funding through the Leicestershire County Council Communities Fund 2020	16
Leicestershire Communities Fund 2020-21 Projects awarded funding in round 2	20

Introduction

This report has been prepared to highlight the outcomes and impacts of the Leicestershire County Council Communities Fund. The report outlines the development and operation of the Fund, along with the outputs, outcomes and impact achieved by projects funded by it. It also considers how effective the Fund has been, in terms of meeting its overall aims and objectives, through the support provided to voluntary, community and social enterprise (VCSE) sector organisations that benefitted from funding, during the Covid 19 pandemic. Finally, the report sets out recommendations for the design and development of future funding support for the VCSE sector, particularly that which may be provided in response to the ongoing Covid 19 pandemic.



Development and operation of the Communities Fund

The Leicestershire County Council Communities Fund was launched on Monday 30th March 2020, following a decision by Cabinet to establish a £1m fund to help Voluntary Community and Social Enterprise (VCSE) sector organisations to continue to provide services for vulnerable people during the Covid-19 pandemic.

The funding criteria for the scheme were based on the findings of an engagement exercise with VCSE groups (SHIRE Grant recipients from the previous 12 months) pre-lockdown, to ascertain what the impacts of the pandemic were likely to be for their organisations. Feedback from the survey identified the main issues that were anticipated as:

- Loss of income as a result of traded services having to cease, e.g. charity shops, community cafes, etc
- Staff being unable to work due to social distancing, self-isolation or caring responsibilities (including for school-aged children and older family members)
- A significant decrease in the number of available volunteers due to the above and due to many volunteers being over 70 years of age and thus having to self-isolate
- Reduced ability to deliver face to face services, or have services users attending groups
- An increased need for services to be delivered digitally/virtually
- Increased volunteer expenses, e.g. from a smaller pool of volunteers having to undertake more volunteering tasks

The grant fund was intended to mitigate the above impacts, to enable groups to remain sustainable and to fund the community response to support vulnerable people during the pandemic. Grant criteria (Appendix A) were therefore broad and inclusive, whilst also focusing limited resources on groups and organisations that support vulnerable people.

The scheme immediately attracted a very high level of interest from the VCSE sector. In order to provide a rapid response to applications, a team of approximately 20 officers was quickly established to assess the applications received and to support a fast-track decision making and payment process.

Case Study

Lutterworth Crisis Action

Lutterworth Crisis Action, led by St Mary's Church in Lutterworth received £5,250 to help recruit and mobilise community volunteers to provide support to those most in need, particularly for people in households who were self-isolating during the pandemic.

In total, the initiative recruited nearly 150 volunteers and provided support to over 200 local residents who were impacted by the Covid crisis.

More details can be seen at www.lutterworthchurch.org/crisis

£5,250

Over a period of 3 weeks, around 240 applications for funding were received. After the second week, Cabinet agreed to increase the grant fund by a further £500,000. The grant scheme was closed to new applications at the end of the third week and following assessment of remaining applications, a total of 159 organisations were awarded funding from the scheme for proposals amounting to almost £1.5m in value. The funding awarded ranged from small grants of approximately £1,000 to large grants of no more than £25,000. Funding was offered to organisations to help them manage a range of budgetary pressures, including organisational running costs (such as rent and leases, utilities and building maintenance), staff salaries, volunteer expenses and capital equipment (such as additional ICT equipment to enable services to be delivered/maintained remotely).

In July 2020, in response to the local Leicester lockdown, the county council announced the commitment of an additional £100k to the Communities Fund to help community groups supporting vulnerable people, specifically in the areas of the county affected by the extended lockdown. Groups within these areas (Appendix B) were able to apply for a maximum of £2,000. A total of 75 applications for funding were received for Round 2 (over a 2-week period). Initial recommendations were shared with elected members representing the appropriate electoral division, for their endorsement before final decisions were made on Friday 7th August. 62 projects were awarded funding totalling £75,229 and 13 applications were rejected, as they failed to meet the grant criteria.

In recognition of the efficient and responsive way the Communities Fund was administered, the county council received an award from the charity Leicestershire Cares. The Award highlighted the positive difference the funding had made to community organisations and that it had been delivered in a very short timescale, during a time of significant challenges.

Details of the types of projects which benefitted from the Communities Fund, along with the geographical areas covered and a schedule of funded projects, are set out at Appendix C. Case studies of projects which were awarded funding can be seen on the Leicestershire Communities [website](#).

Case Study

Coalville Education Partnership

Coalville Education Partnership (CEP) is an alternative education provider, which supports students who are excluded from mainstream education. One of the activities undertaken by the organisation is to offer training around cooking and meal preparation for young people. The impact of the pandemic meant that CEP was unable to offer their usual activities to young learners.

The organisation however responded quickly by utilising its on-site kitchen facilities to prepare food and deliver this to vulnerable and disadvantaged people living in Coalville and surrounding area. CEP benefitted from £22,780 funding to help with staffing, food and running costs for the operation.



£22,780

Case Study

John Storer House

£12,500

John Storer House is a community centre in Loughborough which operates a range of services, including a community café, wellbeing services, day services for adult social care service users and a venue for the delivery of other community projects/activities. As a result of the pandemic, the building was closed to the public, and the centre was approached by Charnwood Borough Council to operate as Covid Hub for Charnwood (Charnwood Community Action). The café area was utilised as office space, taking calls from anyone in the community requiring support. The centre also operated as the central coordinating hub for food provisions for Charnwood, including a storage area for food supplies. John Storer House received £12,500 from the Communities Fund to assist in its role as a community hub during the pandemic.

Operational effectiveness

From an operational perspective, the Communities Fund has been a great success as it has provided accessible and targeted funding for VCSE organisations that needed it within a very short space of time, whilst also incorporating enhanced financial, fraud and organisational checks on organisations that were recommended for funding.

An assessment of the delivery process for the Communities Fund has identified that its success was enabled by several key factors as follows;

- The use of existing skills, expertise and knowledge from administration of the SHIRE Grants programme.
- A team of assessors that was expanded to include officers from across the Strategy and Business Intelligence Branch, with assistance from Public Health Local Area Coordinators, in a short space of time to deal with the high volume of applications received.
- The use of the Leicestershire Communities website to promote the grant scheme, to quickly develop the online application form and to enable on-line reporting on project delivery.
- The use of existing contacts and networks in the VCSE sector and with partner organisations to ensure the grant scheme was promoted widely.
- Early discussions with Resources colleagues which enabled a 'fast-tracked' payment process to be utilised, to ensure organisations would receive the funds swiftly, whilst also including rigorous finance and anti-fraud checks.

Following on from payments to VCSE organisations, progress with spending the grant and with the delivery of outcomes has been managed and monitored by grants officers to ensure that evidence of expenditure and of delivery is provided within agreed timescales. Many projects have now been completed and final reports provided, and these have informed the analysis of community and VCSE impacts.

Case Study

Leicestershire Cares

Leicestershire Cares is a charity that utilises connections with the business sector to undertake projects that deliver social outcomes. During the pandemic, Leicestershire Cares' staff, along with volunteers from local businesses, established a number of innovative solutions to help local people during the lockdown. This included online/virtual dance and fitness sessions; online cooking tutorials; virtual guided meditation sessions and online quizzes. In addition, the charity coordinated delivery of food and essential items to community groups and individuals affected by the pandemic, supported with an £8,000 grant from the Communities Fund.

£8,000



Community and VCSE impacts

Whilst delivery of Communities Grant projects is ongoing, particularly for those funded as part of Round 2 of the scheme, many funded projects have also been completed and End of Project reports outlining experiences and outcomes have been submitted. An assessment of this feedback from VCSE groups and organisations has been carried out and has identified three key areas of impact from the Fund as follows;

1. Continuing service provision, organisational survival and sustainability

A key element of the rationale for the Communities Grant was the recognition that many VCSE organisations would be severely affected by loss of income from service provision, venue hire, sales and fundraising, whilst also facing ongoing operational costs and an increase in service demand. The overarching objective of the Fund therefore was to help enable the sustainability of the Sector and particularly those groups and organisations supporting vulnerable people. This objective is reflected in the applications that were approved for funding with 59% identifying support for core costs (staffing and other running expenses) as the central purpose of the funding sought.

Feedback from groups that received funding confirmed the importance of this objective, as well as how it has also supported and enabled interrelated activity and outcomes linked to adapted service delivery in response to the pandemic. A few examples are included below:

- Enrych Leicestershire, which supports adults with disabilities, highlighted how the Grant has supported service continuity and a crisis response; “The funding has been used towards core costs to ensure financial sustainability of our charity and enable us to retain a core team to continue operational delivery and deal with enquiries and crisis calls throughout the pandemic lock down.”
- Age Concern Syston stressed the negative impact of the crisis on income generation and how the Grant has enabled ongoing provision; “This grant has enabled us to keep our office open at a time when coronavirus forced us to stop all our community activities, and all our income had ceased.”
- Quetzal reported on how the Grant has allowed it to continue delivering services throughout the pandemic; “We have been able to offer vital support to clients via online and telephone counselling which has enabled the vulnerable women we support to continue on their journeys to recovery. Feedback we have received from clients shows the impact the counselling has on them; “Quetzal have helped me so much during COVID-19, I feel like I have had a rough time lately and X (counsellor) has been an absolute encouragement the whole time, really supportive and helping me when I have needed it the most.”
- Worth-it Positive Education CIC confirmed the importance of receiving the Grant early in the pandemic; “The county council funding provided a lifeline to help us keep going at the height of the pandemic. This has given us time to seek further funding and carry on trading.”

2. Innovation and enhanced and adapted services

Covid 19 has required VCSE sector organisations to respond rapidly to harness community capacity and meet community needs, as well as to respond to increased demand for services, in new and different ways. The Communities Fund has been successful and effective in assisting the development of these services that have enabled vulnerable people to be supported in their communities, at a time of increased isolation, anxiety and hardship for many.

Providing new and enhanced services has enabled organisations to keep in touch with service users and to provide crisis support, such as food and essential supplies. This has often involved retraining, recruiting and mobilising volunteers, developing digital resources to support virtual engagement to deliver services remotely, the introduction of PPE and additional cleaning and increased collaboration with other organisations. Adapting existing services as a result of, and in response to, the pandemic was identified as the primary purpose of grant funding by 26% of organisations who received funding:

- Enrych Leicestershire demonstrated how the grant has supported adapted provision and additional mental health support; “Maintaining a core team enabled us to remain agile and flexible when faced with additional support needs both of those we already support and those who were new to our service. It also enabled us to liaise with other local partners to ensure no one was at risk – e.g. if our services were not appropriate to their needs, we had a team available to liaise with partners to find the most appropriate support. The level of poor mental health amongst those we serve has increased significantly and we are now working to ensure that we continue to provide appropriate support and prevent crises.”
- The Bodie Hodges Foundation reported that; “The benefits of this funding to families was that all sessions continued to be run over video call or via phone support. We were also able to take referrals from new families whose children died during the pandemic. Families have been very anxious, and we have seen a need for our services more than ever and have carried out double the amount of sessions and contacts that we would normally.”
- Vista identified that the grant had enabled the organisation to support partially sighted people with welfare calls and “... to recruit 49 new volunteers who are supporting people in the sight loss community and deliver befriending and safeguarding training.”
- Worth-it Positive Education CIC highlighted the transition to digital delivery; “We are working on converting all our programmes to be delivered through ‘on- demand’ online training as well as ‘live’ training and workshops facilitated online via Zoom. We are about to start building an online training platform to be able to do this. Some of this funding has covered our digital packages such as Zoom and Vimeo to help with the development of this process. We have also invested in some books to help the development of e-learning programmes and organisational capacity.”

3. Community responses to the pandemic

In addition to enabling the continuation of VCSE support for vulnerable people, the Communities Grant also invested in crisis responses solutions within communities, which achieved additional impacts, in terms of developing strengths, assets and new connections within local communities.

Funding was therefore utilised to support new and existing community groups to provide locally based support, including collecting and delivering food and essential supplies, collecting and delivering prescriptions and medication and transport to and from appointments, along with additional support to improve mental health and wellbeing in communities. A total of 15% of funded initiatives identified these types of community response activities as the primary purpose for using the funding received:

- The Melton Learning Hub highlighted how the Grant has supported additional foodbank services; “We are over the moon with the grant we have received. It not only means our regular services can continue, but we can also run a foodbank across Melton ensuring nobody in our community goes hungry during this unprecedented time.”
- Age Concern Syston outlined what had been achieved by local volunteers; “Using community volunteers coordinated by our office staff, we have quickly set up a telephone support service for the elderly and most vulnerable in the Syston area. So far, we have supported over 140 people, and carried out more than 200 tasks for them including collecting prescriptions, shopping, signposting to other organisations and providing help for many other essential services.”
- The Salvation Army pointed to the value of the Grant in supporting their emergency response; “Without the funding we would have not been able to help as many people in the community and we may have had to take the difficult decision to close the Centre. It has been very rewarding to have been able to help so many people (almost 4,000) within our community who have really struggled.”

Case Study

Melton Learning Hub

The Melton Learning Hub is a charity which supports young people and the elderly and vulnerable, primarily in Melton Mowbray, but also further afield. The Hub offers a wide variety of vocational qualifications to young people 14-19 who are excluded or at risk of exclusion from mainstream education. The Hub partnered with Melton Borough Council to create a food bank from its premises. A number of volunteer drivers and staff from the Hub were able to deliver food to families and people in need across Melton, to help people in isolation as well as those who experienced a sudden loss of income. Melton Learning Hub received a grant of £17,550 to assist with running costs during the pandemic.

More details about Melton Learning Hub can be seen here:

<http://meltonlearninghub.org/about-us/>



Conclusion and recommendations

Whilst the Communities Fund was a rapidly delivered crisis response solution to assist the VCSE sector and the Leicestershire communities it supports, it was also closely aligned to the county council's Strategic Plan and Communities Strategy. In particular, the objectives and the outcomes of grant scheme strongly support those of the Strategic Plan that relate to Great Communities and Wellbeing and Opportunity, as well as the priority of the Communities Strategy to support and empower the VCSE sector to provide a range of effective services and activities for individuals and communities.

The Scheme has been effective, not only operationally in terms of the efficiency and speed with which targeted financial support was provided, but also in terms of its short and longer-term achievements. Delivery of funded projects and the benefits that flow from them is ongoing, but the feedback from completed projects has demonstrated substantial impacts relating to both crisis support and sector sustainability. Horses for Causes (providing therapeutic horsemanship, coaching sessions and Equine Assisted learning & Psychotherapy) was typical of many organisations supported by the Communities Grant and summed up its impact as follows;

“A massive thank you to Leicestershire Community funding, for everyone it has been a trying period, and Covid-19 has left a big uncertainty regarding the future. We surely would have had to think seriously about closing our doors if it had not been for the support and funding we have received.”

Following on from the Communities Grant, other funding for the VCSE sector was made available both locally (such as through the Community Foundation) and nationally (including National Lottery funding) and this has provided strong support for sector sustainability and new initiatives. As a result, the financial health of the sector in Leicestershire has improved considerably and the risk of wide-ranging closures has receded. On the other hand however, uncertainty about the impact of the pandemic remains. Many crisis support and welfare support organisations (such as foodbanks) are anticipating a surge in demand linked to reduced incomes and increasing unemployment whilst additional local and/or nation lockdowns will further increase loneliness, isolation and mental health issues and demand for not only shielding support but also wellbeing, mental health and befriending services.

In terms of future funding, the above impacts of the Communities Grant have highlighted what can be achieved through targeted funding support within the framework of the county council's strategic priorities. The more limited county council funds that remain available for the current financial year are proposed to be used to build on the achievements of the Communities Grant to help to mitigate the ongoing impact of the pandemic. To achieve this most effectively it is proposed that the focus of future funding should continue to support organisational sustainability where possible to assist VCSE organisations to ensure they are in a healthy financial position in 2021-22. It would also be appropriate however to ensure that funds are prioritised for those organisations that are delivering critical services and actives for vulnerable people, as well as those who wish to implement new initiatives to support vulnerable people during and after the pandemic. In addition, it is proposed to invest in supporting VCSE organisations to transition in the future, including enabling them to establish adapted and responsive methods of service delivery, to meet the needs of service users in new ways. This approach will strengthen the VCSE sector's ability to provide local solutions that address and respond to community capacity and needs, in light of the ongoing impacts of the pandemic.

Case Study

Oasis Pre-School

Oasis Pre-School is a not for profit, community preschool for children aged 2 - 5 in Asfordby, Melton, with a specialism around SEN and disabilities. During the pandemic, the nursery took on the role of running a food donations pickup and delivery service for local people, along with a clothes bank, with the help of local volunteers. The nursery also delivered 'home learning' activities to families through the post, as well as keeping in-touch with families every week, through social media and on their Facebook page. The nursery was awarded a grant of £1,400 to support the delivery of these services and activities during the pandemic.

£1,400



Appendix A

Communities Grant Round 1 Criteria

Support for core running costs

For organisations that have experienced a loss of income due to services closing or operating at a reduced level and where this may lead to the permanent closure of the organisation.

Extra staffing

Capacity required to meet existing/current or increased demand for services, to support vulnerable people during the crisis

Adapting services

The need to rapidly adapt current service delivery models to maintain contact with service users

Equipment

Funding for essential ICT, safety (such as PPE) or other essential equipment

Transport

Funding for use of vehicles, transport, fuel etc. to enable visits to service users

Expenses

Funding for increased expenses costs such as reimbursing travel costs for staff/volunteers who need to visit service users, if it safe to do so, in their home or in other locations.

Other

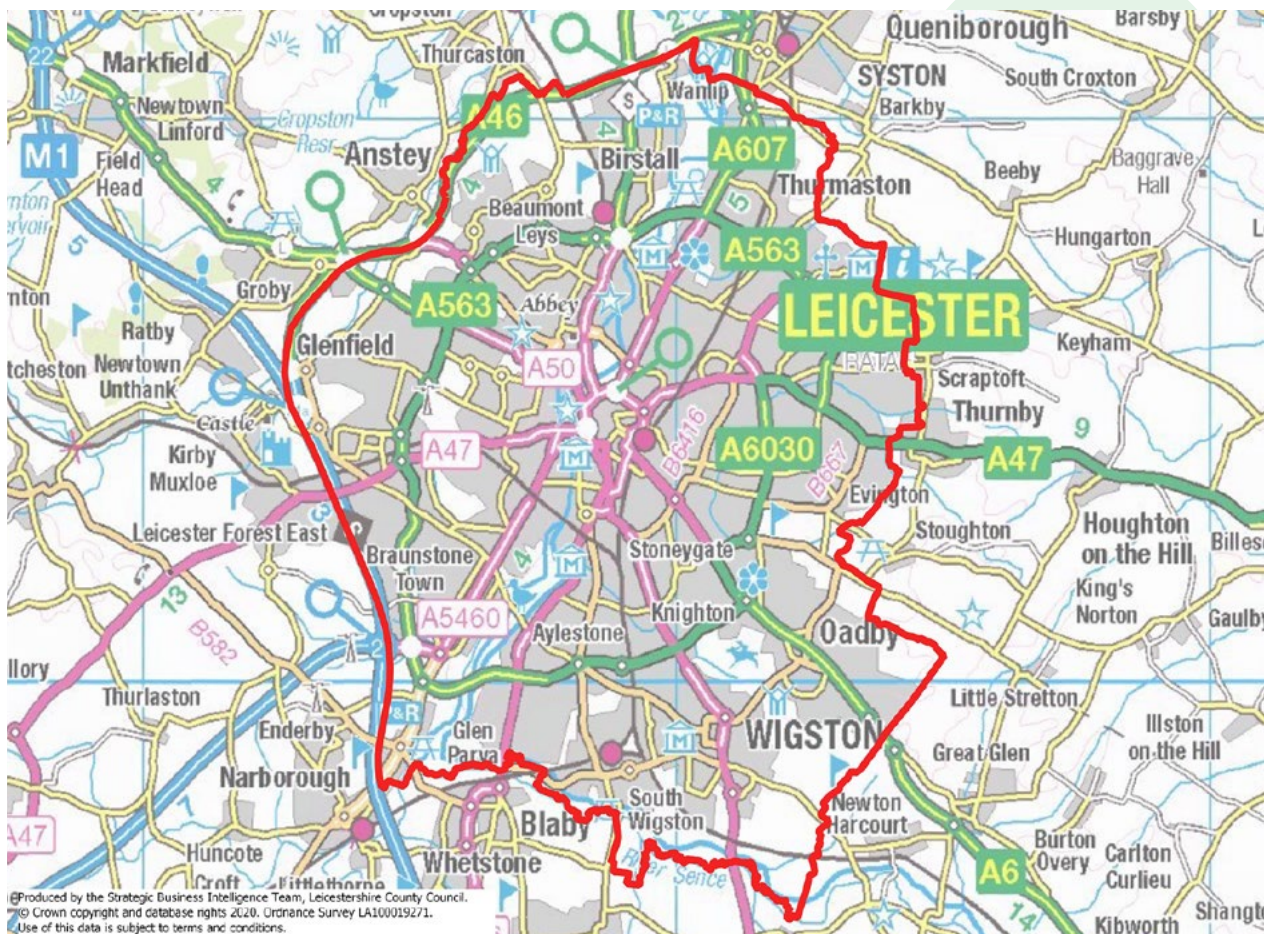
Anything else deemed acceptable in relation to the criteria for the Fund

Appendix B

Areas covered by Communities Grant Round 2

The areas of the extended lockdown in the County eligible for the Round 2 grant are indicated on the map below and were as follows;

1. Braunstone
2. Enderby & Lubbethorpe
3. Glenfield, Kirby Muxloe and Leicester Forests
4. Blaby & Glen Parva
5. Groby & Ratby
6. Birstall
7. Thurmaston Ridgemere
8. Syston Ridgeway
9. East Wigston
10. North Wigston
11. South & West Wigston
12. Oadby



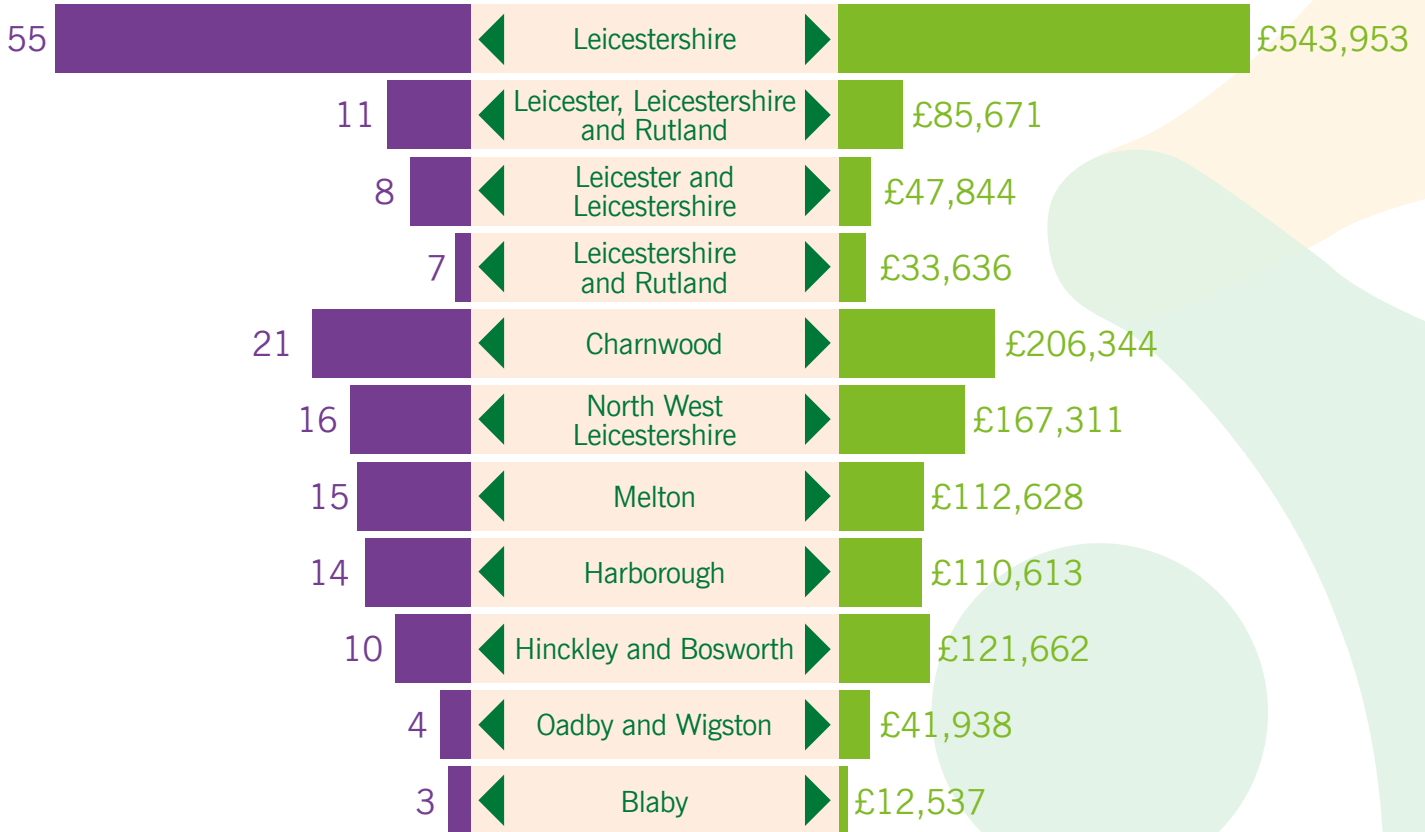
Appendix C

Distribution of Communities Fund Round 1 Grant

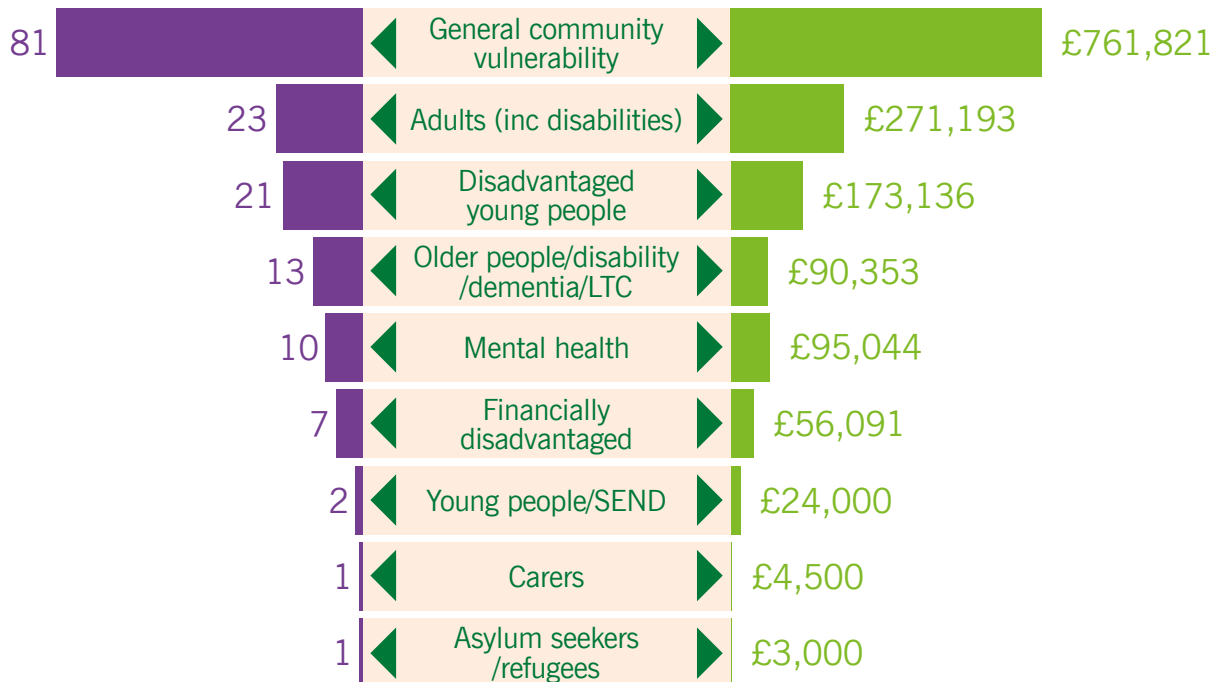
TOTAL PROJECTS **159**
Number of projects

TOTAL AMOUNT **£1,479,138**
Funding awarded

PROJECTS SUPPORTED BY DISTRICT



PROJECTS SUPPORTED BY THEME



List of projects awarded funding through the Leicestershire County Council Communities Fund 2020

Ref No.	Name of Organisation	What the funding will be used for	Amount Awarded	Geographical Area
2024	Above & Beyond - Developing Potential CIC	6mths Operational Costs	£17,700	Charnwood
2027	Academy for Dementia Research & Education	Staffing and Running Costs	£10,000	Harborough
2104	Access All Areas Training CIC	6mths room hire & training materials	£3,000	Melton
2113	ADAPT Prembabies	Core Costs & Staffing	£4,500	Leicestershire
2034	ADHD Solutions CIC	Staff & Equipment	£15,000	Leicestershire
2120	Afghanistan & Central Asian Ass	Staff & Equipment	£3,000	Leicestershire
2084	Afro Innovation Group	Equipment	£10,000	Leicestershire
1980	Agar Nook Community Association	Core Costs & Equipment	£4,021	North West Leicestershire
2054	Age Concern Lutterworth & District	Staff Costs	£9,733	Harborough
2001	Age Concern Syston	Phone support and shopping, incl food parcels and prescriptions	£5,000	Charnwood
1955	Age UK Leicestershire & Rutland	Core costs - staffing and comms	£12,500	Leicestershire & Rutland
2097	Anjuman e Saifee Leicester	Months Ratio of Materials	£5,000	Leicestershire
2159	Antoin Akpom Achievements Foundation	Remote working equipment & training	£6,975	Leicester & Leicestershire
1979	Arthritis Support Leicestershire	Running Costs	£4,380	Leicestershire
1917	Ashby Food Bank	Running Costs	£5,000	North West Leicestershire
2045	BACA Charity	IT Equipment	£5,189	Charnwood
1948	Bangladesh Social Ass (BSA) Loughborough	Core Costs & food parcels	£9,250	Charnwood
1982	Barrow Baptist Church	Core costs including salary costs and food provision	£7,850	Charnwood
1937	Benefice of Groby & Ratby	Core costs & supplies for beneficiaries	£22,436	Hinckley & Bosworth
1966	Bodie Hodges Foundation	5mths running costs for essential staff	£11,500	Leicestershire
2028	Boromi	Core costs	£21,782	Leicestershire
2117	BrightSparks	Course Costs	£16,450	Leicestershire
1976	British Deaf Association	Running costs	£24,503	Leicestershire
1912	Broughton Alive	Core running costs & equipment	£11,015	Harborough
2009	Carillon Wellbeing Radio	Costs to cover cafe closure	£15,000	Leicestershire
1929	Castle Donington Volunteer Centre	Equipment	£12,700	North West Leicestershire
2143	Centre for Fun & Families	Mobile Working Costs	£2,908	Leicester & Leicestershire
1930	Chabad Lubavitch Leicester	IT Equipment & packs	£2,875	Leicester, Leicestershire & Rutland
2166	Charity Link	Core Costs	£10,000	Leicester, Leicestershire & Rutland
1995	Charity Starts at Home	Shopping Service for elderly & vulnerable	£800	Charnwood
1934	Charles Booth Centre	Running Costs	£12,500	North West Leicestershire
1924	Charnwood 20:20	Staffing	£11,000	Charnwood
2147	Chroma Church	Food, toiletries and transport	£200	Leicester & Leicestershire
2095	Citizens Advice Charnwood	Laptops	£16,790	Charnwood
2108	Citizens Advice LeicesterShire	Equipment to Work from Home	£13,409	Leicestershire
2178	Clare Walker Consultancy CIC	Staff, training, equipment & software	£10,000	Leicester & Leicestershire
2023	Clawson Kindness	Petrol and set-up costs for home service	£7,015	Melton
1999	Coalville Education Partnerships CIC	Staff and food distribution	£22,780	North West Leicestershire

Ref No.	Name of Organisation	What the funding will be used for	Amount Awarded	Geographical Area
1989	Coping with Cancer	2-3mths of Core Costs due to loss of income	£21,136	Leicestershire & Rutland
2052	Coronavirus Community Response Team	3mths of food, care & activity packs	£16,077	North West Leicestershire
2171	Cruse Bereavement Care Leicestershire & Rutland	6mths of Service Adaptations	£6,000	Leicester, Leicestershire & Rutland
2165	Deafblind UK	6mths of Core Costs	£4,595	Leicestershire
2100	Drum & Brass CIC	PC & Core & Training costs	£4,860	Leicestershire
2020	East Midlands Army Responders	Running Costs and Equipment	£10,000	Leicestershire
1919	Elliott Hall For Youth & Community C.I.C	Core Costs incl. rent	£5,700	Oadby & Wigston
2008	Elohim Church Meeting Point	3mths Projected Costs	£8,750	Hinckley & Bosworth
2106	Emmaus	Staff, Operation & Support Costs	£18,000	Leicestershire
1968	Enderby Mission Church	Core cost, PPE Equipment & Batch Cooking	£5,200	Blaby
2021	Enrych	2mths staffing costs	£11,000	Leicestershire
2126	Falcon Support Services EM Ltd	Staff, PPE & overheads	£20,950	Charnwood
2132	FareShare Midlands	Additional operational costs	£8,000	Leicestershire
2053	Fearon Community Association	3mths Staff Costs	£11,955	Charnwood
2082	Feed the Hungry UK	8wk staff costs, food parcels	£10,000	Hinckley & Bosworth
1908	Feed the Need Coalville	Food, volunteer and other expenses	£8,352	North West Leicestershire
1978	Forever Savvy	Rent & IT Equipment	£4,095	Leicestershire
2044	Forward Thinking Movement & Dance	One to One Care, On-line work & PPE	£18,000	Leicestershire
1990	Fosse Media Ltd	Replace lost income to keep going	£12,500	Leicestershire
2088	Free VA	Staff costs & Equipment	£15,913	Leicestershire
1956	Gems cash for kids	Food and non perishable goods for community	£24,990	Leicestershire
2107	George Ward Centre	Running Costs	£4,690	Hinckley & Bosworth
2080	Giving World	Laptops & Pallet Trucks	£5,586	Leicestershire
2026	Glenfield Support Group	Volunteer travel, PPE, food & toiletries for vulnerable residents	£5,000	Blaby
1997	Go-Getta CIC	Set up and delivery of digital outreach services	£12,300	Leicestershire
2179	Gorse Covert Community Ass.	Staff & Running Costs	£6,488	Charnwood
1939	Hab Anti-Bullying	Online Services	£5,000	Harborough
2149	Harborough Twenty 12 Lions Club	Fuel	£1,250	Harborough
2098	Harmless CIC	Staff costs & Equipment	£5,000	Leicestershire
1953	Headstrong Wellbeing CIC	Equipment & Resources	£6,643	Leicestershire
2170	Headway	Equipment & Postage	£2,500	Leicester, Leicestershire & Rutland
2040	Health Link Services	Training, equipment and organisational running costs	£5,575	Leicester & Leicestershire
1910	Help the Homeless	Emergency provisions for Homeless and those at risk of eviction	£8,850	Leicester, Leicestershire & Rutland
1949	Helping Hands Community Trust	Core costs including staffing costs	£19,238	Oadby & Wigston
2019	HFM Radio Ltd	Running Costs	£12,000	Harborough
1940	Hinckley Club for Young People	Staff & Overheads	£12,412	Hinckley & Bosworth
2099	Home Start - South Leicestershire	IT, Staff & loss of room income	£9,775	Leicestershire
1935	Home Start Horizons	Core Costs & workbooks	£5,000	Leicester, Leicestershire & Rutland
1918	Home-Start North West Leicestershire	Salaries	£2,007	North West Leicestershire
2051	Horses for Causes	Better quality equipment for live streaming	£2,337	Blaby
2083	Hospice Hope	3mths Staff Costs	£16,173	North West Leicestershire
1915	Huncote Methodist Church	Running costs & security on property	£3,000	Hinckley & Bosworth
1969	Iconic Music, Dance & Drama	Additional staffing	£3,000	Leicestershire

Ref No.	Name of Organisation	What the funding will be used for	Amount Awarded	Geographical Area
1970	Islastones Foundation	Rent	£1,080	Leicestershire
2059	John Storer House Charnwood	Staff & transport costs for the Charnwood Hub	£12,500	Charnwood
2093	Kibworth Beauchamp PC	Staffing, food supplies, PPE etc	£6,000	Harborough
2055	LAMP	Bring forward digital based advocacy service.	£8,000	Leicestershire
1975	Learning for the Fourth Age	Overhead Costs	£845	Leicestershire
2071	Leicester Animal Aid	3mths Core Staff Costs	£5,000	Leicestershire
2103	Leicester South Food Bank	Running Costs	£12,000	Oadby & Wigston
2048	Leicester University Community First Responders	Additional equipment to increase capacity	£1,400	Leicestershire
2076	Leicestershire & Rutland 4x4 Response	Delivery of prescriptions in Melton Borough	£10,881	Melton
1902	Leicestershire Cares	Core funding for staffing	£8,000	Leicestershire
1991	Leicestershire MS Therapy Centre	Core costs inc. Oxygen	£5,000	Leicestershire
2007	Leicestershire Search & Rescue	Annual Insurance Fees	£6,500	Leicestershire
2114	Little Bird SOS	Core Costs & Equipment	£9,158	Leicester, Leicestershire & Rutland
1992	Live Cancer Free Ltd	Staffing & Food Parcels	£6,000	Leicestershire
2068	Long Eaton & Sawley Foodbank	18wks Food, Delivery costs & staffing	£4,860	North West Leicestershire
2089	Loughborough Wellbeing Centre	Sessional workers	£15,600	Charnwood
2172	Lutterworth Community Transport	Core & Increased Services	£2,800	Harborough
2116	MARG	Staff & Call costs	£3,000	Leicestershire
1906	Markfield Community Ass	Core Costs	£15,540	Hinckley & Bosworth
2050	Matt Hampson Foundation	4-month salary for delivery of sessions through video-calling.	£5,000	Charnwood
2036	Melton and District Money Advice Centre	Running costs and staffing	£12,500	Melton
2077	Melton Mencap	Staff Costs	£10,000	Melton
2135	Melton Mowbray Lions Club	PPE making & delivery of services to elderly & disabled	£10,000	Melton
2163	Menphys Ltd	Staff, Core Costs & Food Packages	£18,000	Leicestershire
2003	Mosaic	PPE, Laptops & other items	£11,296	Leicester, Leicestershire & Rutland
1977	MRC Community Action	Running costs	£23,700	North West Leicestershire
2061	National Forest Responders	Kits bags	£6,000	Leicestershire
1964	Oadby and Wigton Lions Club	Purchase of food for food bank	£5,000	Oadby & Wigston
2043	Oasis Preschool and Retreat	Core Costs	£1,400	Melton
2091	Outspoken	PPE, Fuel & Food Costs	£5,000	Leicestershire
2153	PASIC	12wks Transport, Postage & Administrator	£1,967	Leicester, Leicestershire & Rutland
2139	Peter Le Marchant Trust	Maintenance, Marketing Etc	£4,000	Charnwood
2161	ProActive Community Endeavours (PACE)	6ths Food Parcels, Staff, PPE etc	£12,000	Charnwood
1916	Quetzal	Core organisation costs	£10,025	Leicester, Leics and Rutland
2151	Raedan Institute	Core Costs & new equipment for on-line working	£10,000	Leicester & Leicestershire
1960	Rainbows Horses Learning Centre CIC	Running costs & overheads	£11,700	Melton
2078	Recovery Assistance Dogs	1mth Staff & Running Costs	£3,186	Leicester & Leicestershire
1963	Samworth Centre Trading as Marys Place	Running Costs	£5,000	Melton
2094	Scalford Triangle Community Group	Food parcels & expenses	£1,572	Melton
1965	Shepshed Food Bank	Buying food and running costs	£5,040	Charnwood
1936	Shepshed Special Community Bus	Running costs & overheads	£6,232	Charnwood

Ref No.	Name of Organisation	What the funding will be used for	Amount Awarded	Geographical Area
2144	Shepshed Toy Library	Running Costs	£3,000	Charnwood
1974	Shopmobility Market Harborough	Staff & insurance costs	£5,000	Harborough
1957	Shopmobility Melton Mowbray	Staff, insurance & maintenance costs	£3,500	Melton
2042	Small World Nursery	3mths staff costs	£5,000	Charnwood
2128	SMART Inclusive SEN CIC	Staff, training & overheads	£13,010	Leicestershire
1958	Social Training Activities & Recreational Sport - STARS	Core costs - staffing and comms	£10,000	Leicestershire
2006	South Leicester First Responders	Additional equipment	£20,000	Harborough
2101	St Johns Ambulance	Equipment	£12,500	Leicestershire
1923	Steps Conductive Education Centre	IT Equipment	£25,000	Charnwood
1911	Sunflower Radio Station	Transmission Equipment	£5,665	Harborough
2085	Sunny Skies Enterprises	Loss of earnings & Craft Items	£540	Melton
1931	Supporting Confidence Through Exercise	Staffing & online resources	£15,480	North West Leicestershire
2037	TEAMS Charity	Overheads & Staffing	£10,000	Leicestershire
1922	The Bridge (East Midlands)	Staffing, core & equipment	£9,142	North West Leicestershire
2150	The Bridge Homelessness to Hope	Staff, Clothing & Food	£4,000	Leicester & Leicestershire
2066	The Carers Centre	16wks Core Costs	£15,000	Leicestershire
2162	The Conservation Volunteers	Core Costs	£4,934	Leicestershire
2046	The Exaireo Trust	One-off capital purchases and contribution to running costs.	£10,440	North West Leicestershire
2124	The Eye FM	Loss of income	£8,755	Melton
2011	The Laura Centre	Salary costs	£14,000	Leicestershire
1951	The Little Explorers Activity Club	Running Costs & on-line resource development	£6,350	Leicestershire
1954	The Melton Learning Hub	Running costs to operate as a local Hub for Melton during Covid19	£17,550	Melton
1988	The People's Buddhi	Increased hrs, overheads & Equipment	£8,000	Leicestershire
2029	The Recovery Consultancy	Mobilisation of a 'virtual project' using technology	£6,808	Leicestershire
2125	The Salvation Army	Staff costs & food distribution	£18,000	Leicester
2109	The Tomorrow Project	Staff Costs & Equipment	£10,814	Leicestershire
2057	The Way of the Horse	Move therapy and mental health support to an on-line format	£10,000	Harborough
1925	The Well Kibworth	Staff costs, running costs & equipment	£11,200	Harborough
1986	Think FC CIC	Meal preparation, volunteer equipment and transport/delivery costs.	£3,079	North West Leicestershire
1928	Ullesthorpe Congregational Church Community	Equipment & resources	£950	Harborough
1973	Vista	Running costs for 4 staff members	£24,062	Leicestershire
1909	WCDA /Wesfield Community Centre	Core costs and overheads	£24,860	Hinckley & Bosworth
2177	West Leicestershire CFR	Vehicle Running Costs	£1,722	Hinckley & Bosworth
2018	Women's Aid Leicestershire	Increased cleaning of Refuge Centres	£24,269	Leicestershire
1926	Woodstock in Whitwick	Financial and associated support to individuals self isolating	£1,000	North West Leicestershire
1952	Worklink	Rent	£18,252	Hinckley & Bosworth
2072	Worth-It Positive Education	10% of 6mths Staff, overheads & equipment costs	£2,100	Leicestershire
2158	Young Leicestershire	Activity packs, travel & staff	£10,000	Leicestershire
2047	Youth Support Trust	Support for people who do not have access to IT	£9,215	Melton

Leicestershire Communities Fund 2020-21 Projects awarded funding in round 2

Ref No.	Name of Organisation	What the funding will be used for	Amount Awarded	Area	Theme
2234	MARG	Continuation and expansion of befriending service	£2,000.00	Charnwood Blaby	Older People
2236	4th Leicester Scout Group	PPE, signage, cleaning products	£610.00	Blaby	Children, Young People & Families
2237	28th/61st Wigston Scout Group	PPE, signage cleaning products	£1,536.00	Oadby & Wigston	Children, Young People & Families
2238	Community Action Partnership	Fuel and phone bill	£1,220.00	Blaby Oadby & Wigston	Older People
2239	Drum and Brass CIC	Podcast recording kit	£1,500.00	Charnwood Blaby	Older People
2240	Oadby and Wigston Hindu Community	IT equipment	£500.00	Oadby & Wigston	General Community Vulnerability
2241	Menphys	Care Packages	£1,989.00	Oadby & Wigston	Children, Young People & Families
2242	Coping with Cancer in Leicestershire and Rutland	PPE, cleaning products	£1,000.00	Blaby	Adults (incl. Disabilities)
2243	Glenfield Parish Council	Portacabin for foodbank	£2,000.00	Blaby	Older People
2248	Muslim School Oadby	IT equipment, PPE	£1,000.00	Oadby & Wigston	Children, Young People & Families
2250	Oadby Foodbank	Storage for food items	£557.65	Oadby & Wigston	General Community Vulnerability
2252	Anand Group	Venue hire, food, PPE, cleaning	£2,000.00	Oadby & Wigston	Older People
2254	Oadby Sewak Samaj	Rent, insurance, food, honorarium,	£2,000.00	Oadby & Wigston	Older People
2255	Thrummy Drummer Dementia Group	Safeguarding training, PPE, tables	£1,300.00	Charnwood	Older People
2256	Oadby Owls FC	PPE Signage sanitise stations	£1,000.00	Oadby & Wigston	Children, Young People & Families
2257	Boromi	Wages and activity boxes for 3-5 year olds	£1,980.00	Oadby & Wigston	Children, Young People & Families
2259	Charity Starts At Home	Staffing and equipment	£2,000.00	Charnwood	Older People
2262	Blaby & Whetstone Youth Club Ltd	Salaries, PPE, cleaning, activities	£1,110.00	Blaby	Children, Young People & Families
2263	Elliott Hall for Youth and Community CIC	Rent / utilities, PPE, cleaning	£1,730.00	Oadby & Wigston	General Community Vulnerability
2269	Wigston Framework Knitters Museum	Running costs, cleaning materials & income support	£200.00	Oadby & Wigston	General Community Vulnerability
2271	Guru Tegh Bahadur Gurdwara	PPE, equipment, cleaning, food, printing & advertising	£500.00	Leicestershire	General Community Vulnerability
2273	Greater Wigston Heritage Centre	Equipment & Volunteer costs	£750.00	Oadby & Wigston	General Community Vulnerability
2274	Ramgarhia Board Leicester	Food supplies and salaries	£500.00	Blaby Charnwood Oadby & Wigston	Older People
2275	Leicestershire GATE (Gypsy and Traveller Equalities)	Salaries and travel expenses	£1,000.00	Blaby	General Community Vulnerability
2276	Braunstone Swimming Club	Staff, overheads etc.	£1,500.00	Blaby	Children, Young People & Families

Ref No.	Name of Organisation	What the funding will be used for	Amount Awarded	Area	Theme
2277	Oadby & Wigston Division Guide Association	PPE, cleaning	£1,995.00	Oadby & Wigston	Children, Young People & Families
2279	Groby Allotment Society	Resurfacing car park	£1,000.00	Hinckley & Bosworth	General Community Vulnerability
2281	St Thomas the Apostle PCC	Overheads, Salaries & income loss	£1,940.00	Oadby & Wigston	General Community Vulnerability
2282	Ratby Church Rooms	Cleaning and refurbishment works	£1,000.00	Hinckley & Bosworth	General Community Vulnerability
2286	The Conservation Volunteers (TCV)	Mini-bus insurance, PPE resources	£594.00	Blaby	Adults (incl. Disabilities)
2288	Ratby Library & Community Group	Utilities, PPE, stock for café	£1,000.00	Hinckley & Bosworth	General Community Vulnerability
2289	Zak's Cafe Ltd / Zeph's Cafe	Salaries	£2,000.00	Oadby & Wigston	General Community Vulnerability
2290	The Baldwin Trust	PPE and cleaning equipment	£2,000.00	Leicestershire	Adults (incl. Disabilities)
2291	Arthritis Support Leicestershire	Salary for administrator	£500.00	Leicestershire	Adults (incl. Disabilities)
2293	Midland Langar Seva Society	Food, PPE, fuel cost	£1,500.00	Leicestershire	Financially Disadvantaged
2294	St Crispin's, Braunstone Town with Thorpe Astley, PCC	PPE, deep clean, utilities	£2,000.00	Blaby	General Community Vulnerability
2297	Oadby Support Group / Mindful Warriors	Online yoga sessions	£1,000.00	Oadby & Wigston	Older People
2300	LFE Community Library	PPE, cleaning equipment & running costs	£597.00	Blaby	General Community Vulnerability
2301	26th Leicester Blaby Scout Group	Outdoor sink, cleaning items and cleaning costs	£1,000.00	Blaby	Children, Young People & Families
2302	Leicester Neptune Swimming Club	Assistance due to reduce capacity costs	£550.00	Oadby & Wigston	General Community Vulnerability
2306	Hathi Productions	PPE, Overheads and Equipment	£500.00	Oadby & Wigston	Children, Young People & Families
2307	Age UK Leics & Rutland	Staffing, running costs and volunteer expenses	£2,000.00	Oadby & Wigston	Older People
2308	Citizens Advice Charnwood	Equipment, materials and running costs	£532.58	Charnwood	Financially Disadvantaged
2309	The Sewing Bus	Set up costs for the Sewing Bus	£2,000.00	Oadby & Wigston	Children, Young People & Families
2311	Charity Link	PPE and mobile phones	£1,000.00	Blaby	Financially Disadvantaged
2312	St Pauls Church, Oadby	PPE and video recording equipment	£2,000.00	Oadby & Wigston	Adults (incl. Disabilities)
2313	Bradgate Rotary	Venue hire, entertainment, PPE, food	£1,000.00	Charnwood	General Community Vulnerability
2315	Groby Community Library Group	Counter screen, PPE, cleaning, signage	£500.00	Hinckley & Bosworth	General Community Vulnerability
2316	Braunstone Community Life	Set up foodbank Fridge, freezer, shelving, food labels, cleaning	£617.19	Blaby	General Community Vulnerability
2317	Enderby Mission Church	Food bank - emergency food and essentials, mileage, PPE	£1,500.00	Blaby	General Community Vulnerability
2318	South Wigston Methodist Church	Cleaning, PPE, materials and Safety Signage	£500.00	Oadby & Wigston	General Community Vulnerability
2319	The People's Buddhi	Staffing and overheads	£2,000.00	Oadby & Wigston	General Community Vulnerability
2322	LOROS Hospice	Staffing costs for Home Visiting Service	£1,000.00	Blaby	General Community Vulnerability

Ref No.	Name of Organisation	What the funding will be used for	Amount Awarded	Area	Theme
2323	Leicester Musical Memory Box CIC	Staffing costs and equipment	£2,000.00	Oadby & Wigston	General Community Vulnerability
2324	73rd Leicester (Groby) Scout Group	Electric Hot Water Heaters	£950.00	Blaby	Children, Young People & Families
2325	The Neighbour Hub	Shelving, PPE, Cleaning Products & Zoom software	£2,000.00	Oadby & Wigston	General Community Vulnerability
2327	Oadby & Wigston FC	PPE, running costs	£700.00	Oadby & Wigston	Children, Young People & Families
2331	Paddleplus Canoe Club	Rent and associated overheads	£1,071.00	Leicestershire	General Community Vulnerability
2332	Little Bird SOS	Salary, IT subscriptions, equipment	£1,000.00	Charnwood	General Community Vulnerability
2333	Huncote Methodist Church	Washing Machine, Dryer, PPE & Cleaning Equipment	£1,000.00	Blaby	General Community Vulnerability
TOTAL AWARDED IN ROUND 2 = £74,029.42					

